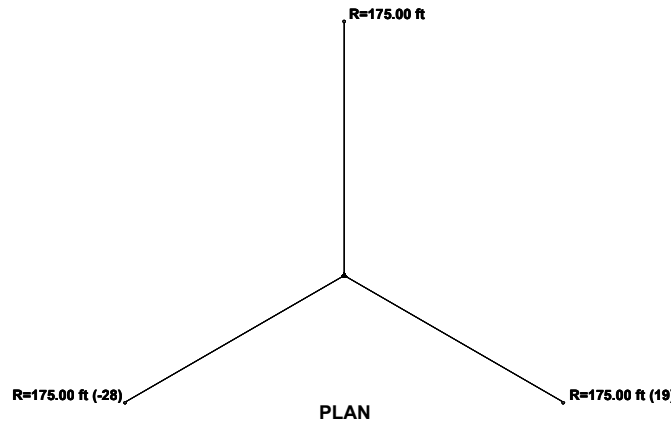
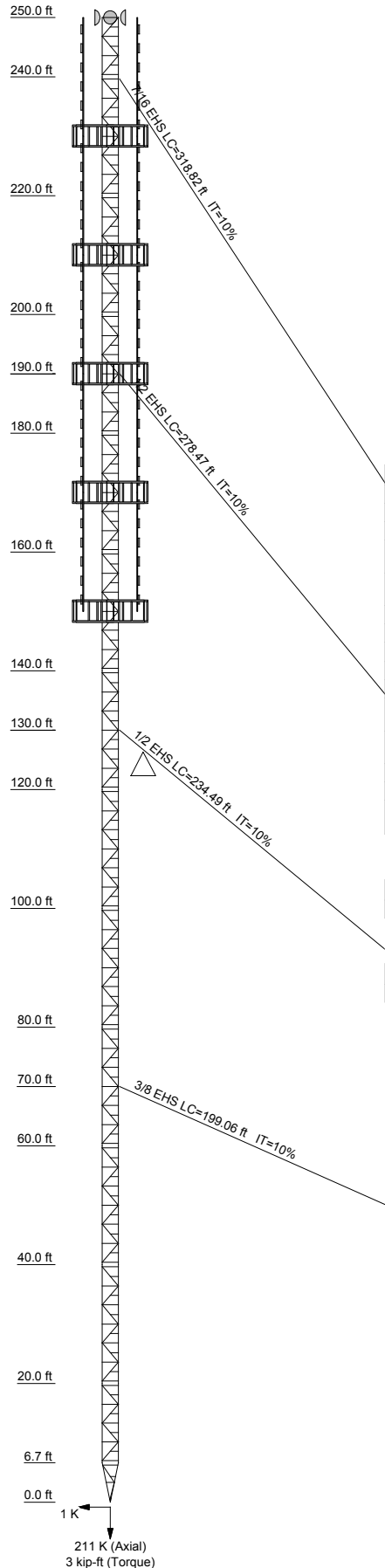


Section	T1	T2	T3	T4	T5	T6	T7	T8	T9	T10	T11	T12	T13	T14	
Legs	SR 1 1/2														
Leg Grade	A572-50														
Diagonals	SR 1														
Top Girts	SR 7/8														
Bottom Girts	A36														
Horizontals	SR 3/4														
Sec. Horizontals	SR 3/4														
Top Guy Pull-Offs	4 X 3/8														
Face Width (ft)	N.A.														
# Panels @ (ft)	69 @ 3.20833														
Weight (K)	11.1	0.3	0.7	1.0	1.0	1.0	1.0	1.0	1.0	1.0	1.0	1.0	1.0	1.0	0.3



DESIGNED APPURTENANCE LOADING

TYPE	ELEVATION	TYPE	ELEVATION
(2) 32" DISH	250	(2) Decibel DB224 (21.25' - 4 elements)*	190
(2) 32" DISH	250	WD13X53 Antenna Mounting Frame	190
(2) 32" DISH	250	WD13X53 Antenna Mounting Frame	190
(2) Decibel DB224 (21.25' - 4 elements)*	230	WD13X53 Antenna Mounting Frame	170
(2) Decibel DB224 (21.25' - 4 elements)*	230	(2) Decibel DB224 (21.25' - 4 elements)*	170
WD13X53 Antenna Mounting Frame	230	(2) Decibel DB224 (21.25' - 4 elements)*	170
WD13X53 Antenna Mounting Frame	230	WD13X53 Antenna Mounting Frame	170
WD13X53 Antenna Mounting Frame	230	WD13X53 Antenna Mounting Frame	170
WD13X53 Antenna Mounting Frame	210	WD13X53 Antenna Mounting Frame	170
WD13X53 Antenna Mounting Frame	210	(2) Decibel DB224 (21.25' - 4 elements)*	150
(2) Decibel DB224 (21.25' - 4 elements)*	210	(2) Decibel DB224 (21.25' - 4 elements)*	150
(2) Decibel DB224 (21.25' - 4 elements)*	210	WD13X53 Antenna Mounting Frame	150
WD13X53 Antenna Mounting Frame	210	WD13X53 Antenna Mounting Frame	150
WD13X53 Antenna Mounting Frame	190	WD13X53 Antenna Mounting Frame	150
(2) Decibel DB224 (21.25' - 4 elements)*	190		

SYMBOL LIST

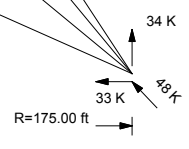
MARK	SIZE	MARK	SIZE
A	2 @ 2.95833		

MATERIAL STRENGTH

GRADE	Fy	Fu	GRADE	Fy	Fu
A572-50	50 ksi	65 ksi	A36	36 ksi	58 ksi

TOWER DESIGN NOTES

1. Tower is located in [REDACTED]
2. Tower designed for Exposure C to the TIA-222-G Standard.
3. Tower designed for a 90.00 mph basic wind in accordance with the TIA-222-G Standard.
4. Tower is also designed for a 30.00 mph basic wind with 0.75 in ice. Ice is considered to increase in thickness with height.
5. Tower Structure Class III.
6. Topographic Category 1 with Crest Height of 0.00 ft.
7. TOWER RATING: 98.6%



ALL REACTIONS ARE FACTORED

World Tower Company
 1213 Compressor Drive
 Mayfield, Kentucky 42066
 Phone: (270) 247-3642
 FAX: www.worldtower.com

Job: **250' Type 36SR / [REDACTED]**
 Project: [REDACTED]
 Client: Middle TN Two Way
 Code: TIA-222-G
 Path: [REDACTED]

Drawn by: kirk
 Date: 12/12/14
 Scale: NTS
 App'd:
 Dwg No. E-1